

FaceStation F2

Fusion Multimodal Terminal



Unrivaled
Face Recognition
Performance



Best-in-class
Multimodal Device



Contactless Solution
for the New Normal



Robust Device Security and
Data Encryption



Unrivalled face recognition performance by Fusion Matching

FaceStation F2 boasts exceptional authentication accuracy achieved by the fusion matching of visual and infrared(IR) face recognition.

*False Acceptance Rate(FAR) of 1 in 10 billion.



- Suprema's unique algorithm optimizes IR and visual face recognition to produce the industry's best face recognition and anti-spoofing performance
- Proven track record of authentication performance regardless of user ethnicity and face changes powered by deep learning algorithm

Best-in-class multimodal with various credentials

FaceStation F2 offers a wide range of authentication options including face, mobile access, fingerprint and cards.



- Register up to 100,000 users for fingerprints authentication and 50,000 users for face authentication
- Supports dual frequency access cards, NFC and BLE-based Mobile Access Cards
- Template-on-Card allows authentication via biometric data stored in cards

AI Deep learning-based AI algorithm applied for live face/fingerprint detection



Contactless solution for new standards of safety and hygiene

FaceStation F2 meets the needs of the post-pandemic world with remote and contactless solution.

- Detects and limits access of users not wearing masks
- Face recognition of users wearing masks
- Remote user enrollment through profile photo uploads
- Combines with Suprema Thermal Camera to identify users with elevated skin temperature

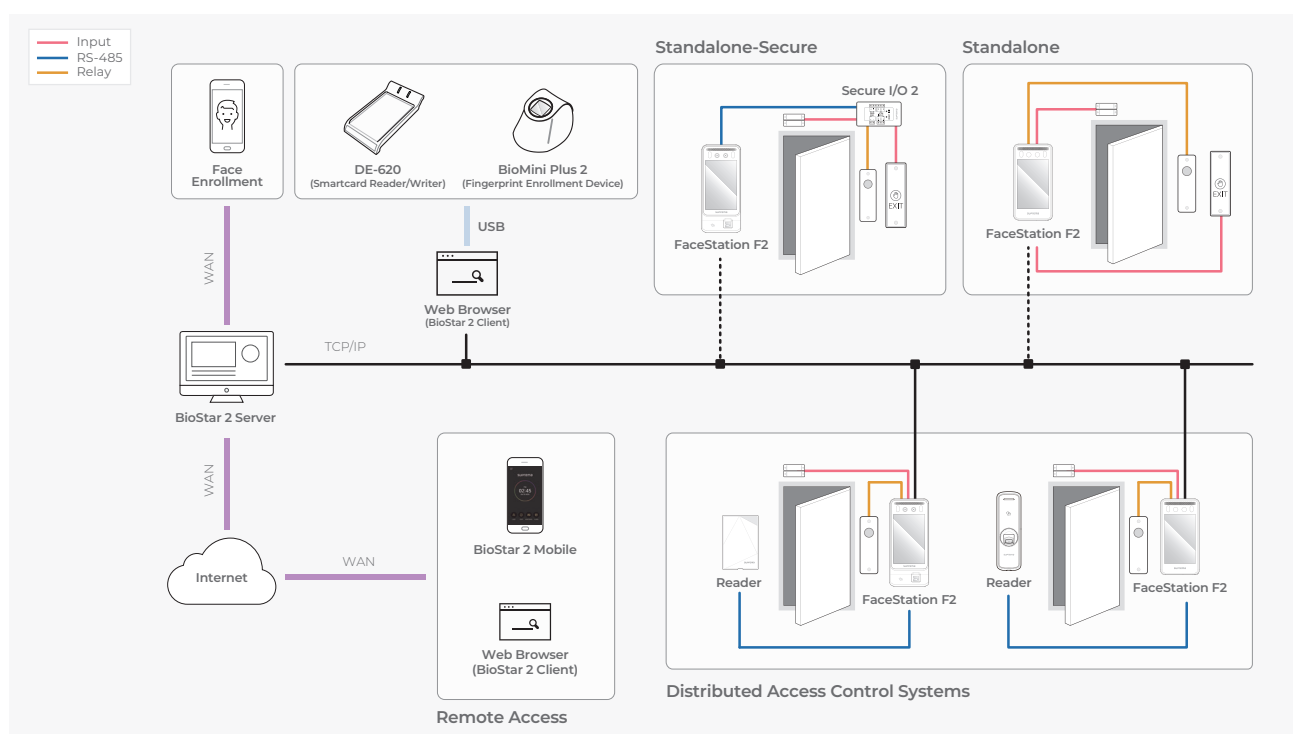
Robust device security and data encryption

FaceStation F2 is equipped with security measures to protect user data.

- Highest level of device security including secure booting process
- Encrypts all biometric credentials and personal information



System Configurations



FaceStation F2

Fusion Multimodal Terminal

Product Specification



Category	Feature	FSF2-DB	FSF2-AB	FSF2-ODB
Credential	Biometric	Face		Face, Fingerprint
	RF Option	125kHz EM & 13.56MHz MIFARE, MIFARE Plus, DESFire EV1/EV2/EV3 ⁽¹⁾ , FeliCa	125kHz EM, HID Prox & 13.56MHz MIFARE, MIFARE Plus, DESFire EV1/EV2/EV3 ⁽¹⁾ , FeliCa, iCLASS SE/SR/Seos	125kHz EM & 13.56MHz MIFARE, MIFARE Plus, DESFire EV1/EV2/EV3 ⁽¹⁾ , FeliCa
	RF Read Range ⁽²⁾	EM/MIFARE/DESFire : 50 mm (2"), FeliCa: 30 mm (1.2")		
	Mobile	NFC, BLE		
General	CPU	1.8 GHz Dual Core + 1.4 GHz Quad Core		
	Memory	16GB Flash + 2GB RAM		
	Crypto Chip	Supported		
	LCD Type	7" IPS color LCD		
	LCD Resolution	800 x 1280 pixels		
	Sound	16 bit		
	Operating Temperature	-20°C ~ 50°C (-4°F ~ 122°F)		
	Operating Humidity	0% ~ 80%, non-condensing		
	Dimension (W x H x D, mm)	119.8 x 233 x 23.5 (4.7" x 9.1" x 0.9")		119.8 x 268.3 x 49.6 (4.7" x 10.5" x 1.9")
	Weight	Device	585g	670g
		Bracket (Including washer and bolt)	181g	205g
	Ingress Protection (IP)	IP65		
	Certificates	CE, FCC, KC, RoHS, REACH, WEEE		
Face	Recognition Distance	0.5m ~ 1.3m (19.7" ~ 51.2")		
	Recognition Height	140cm ~ 190cm (55.1" ~ 74.8")		
	Matching Speed	Less than 0.5 sec		
	Live Face Detection (Anti-Spoofing)	Supported		
Fingerprint	Image Dimension	N/A		300 x 400 pixels
	Resolution			500 dpi
	Template			SUPREMA / ISO19794-2, ANSI-378
	Extractor / Matcher			MINEX certified and compliant
	Sensor Certificates			FBI PIV and FBI Mobile ID FAP20
	Live Fingerprint Detection			Supported (Deep learning-based)
Capacity	Max. User (1:1) * Based on one face/fingerprint enrollment per user	100,000		
	Max. User (1:N) * Based on one face/fingerprint enrollment per user	Face: 50,000		Face: 50,000 Fingerprint: 100,000
	Max. Text Log	5,000,000		
	Max. Image Log	50,000		
Interface	Ethernet	10/100 Mbps, auto MDI/MDI-X		
	RS-485	1ch Host or Slave (Selectable)		
	Wiegand	1ch Input or Output (Selectable)		
	TTL Input	2ch Inputs		
	Relay	1 Relay		
	USB	USB 2.0 (Host)		
	Tamper	Supported		
Power		DC 12V 1.9A, DC 24V 1A * Use a DC 24V 1A adapter. Must follow the product manual when using a DC 12V adapter.		

⁽¹⁾ DESFire EV2/EV3 cards are supported by having backward compatibility of DESFire EV1 cards. CSN and smart card functions are compatible with FaceStation F2.

⁽²⁾ RF read range will vary depending on the installation environment.